



Organics Recycling policy developments in the UK

Jenny Grant

Head of Organics, REA



Who we are

Our Subsidiaries



UK Waste policy

Recycling rates for waste from households

- Scotland – 41.7%
- Wales – 56.7%
- Northern Ireland – 48.4%
- England – 44.1%





Environment Act 2021

2021 CHAPTER 30

- Household waste from March 2026
 - Recyclable household waste must be collected for recycling or composting – includes food and garden waste
 - Food waste must be collected at least once a week
 - Food and garden waste may be collected together where—
 - (a) it is not technically or economically practicable to collect recyclable household waste in those recyclable waste streams separately or
 - (b) collecting recyclable household waste in those recyclable waste streams separately has no significant environmental benefit
- Business waste (non-domestic, industrial and commercial)
 - Requirement for food waste collections from March 2025 or March 2027 for micro-firms



Food and garden waste today



Food waste:

- 9.5 MT total food waste
- 6.6MT from households
 - 4.5 MT still edible
 - 2.1MT inedible
- 18% reduction in food waste since 2007
- Approx 2.2MT recycled through composting and AD

Garden waste:

3.39MT going to composting



Organics Recycling facilities

Compost sites



AD sites



Incentives for AD



Quality Standards

PAS 100:2018

Specification for composted materials

Total contamination (glass, metal, plastic and other non-stone fragments) >2mm

0.25% w/w

Plastic >2mm

0.12% w/w

Scotland:

Plastic >2mm

0.06% w/w

50% of PAS100 limit

PAS 110:2014

Specification for whole digestate, separated liquor and separated fibre derived from the anaerobic digestion of source-segregated biodegradable materials

Total physical contaminants (glass, metal, plastic and other non-stone man-made fragments) >2mm

0.04-0.36kg/t

Scotland:

Plastic >2mm

3.2-28.8g/t

8% of PAS110 limit

Contaminated feedstocks



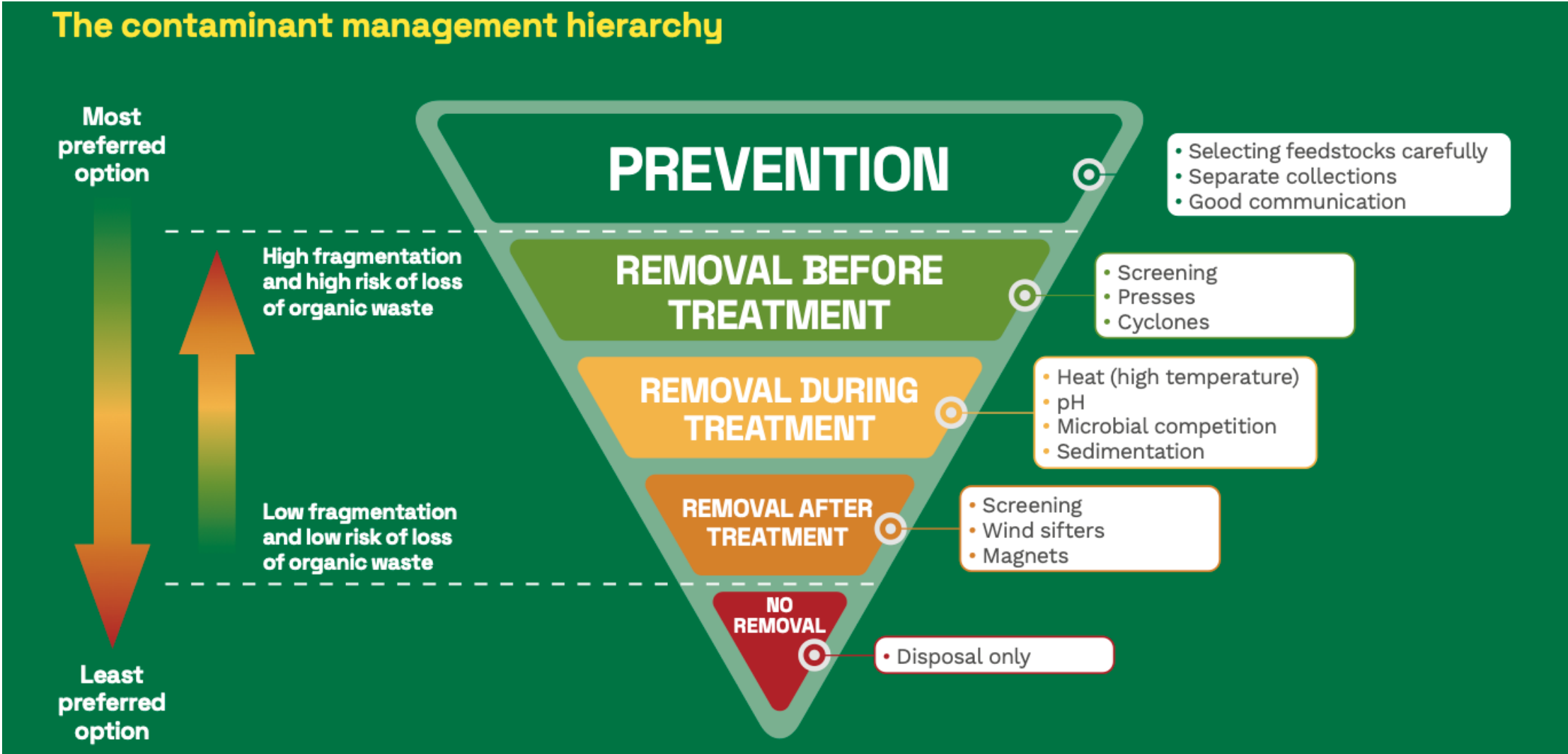




Contamination

- Level of contamination varies
- Estimate 2-8% typically
- Costs time and money to remove
- Conservative estimate of £7.5M per annum in UK
- Case study
 - AD operator paying £156/t
 - Separate, wash, press and dispose of contamination
- ISWA figures £150-200 per tonne of contamination
- USA – 21% of operating costs on contamination removal





Regulatory Permit limits



Standard rules for contamination
(plastic, litter, non compostables)

Composting in open systems max 1% w/w

Composting in closed systems max 5% w/w

Anaerobic Digestion max 5% w/w

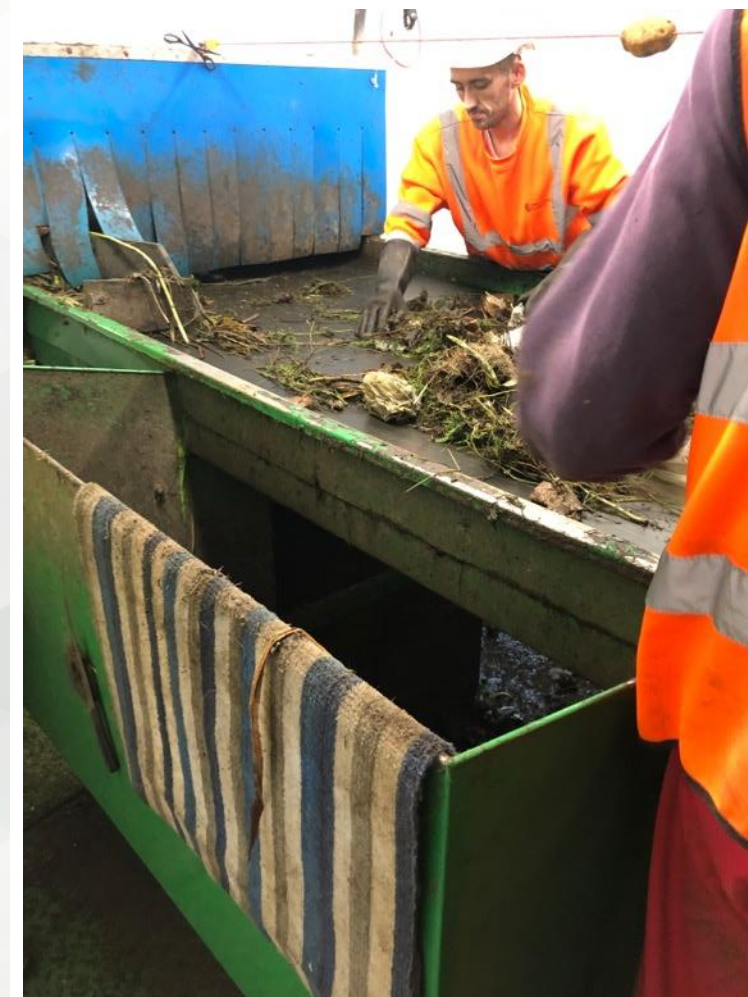
Plus...

As low as reasonably practical by December
2025

Dealing with contamination on site

@reassociation

Removal technique	Green waste	Food waste	Packaged food waste	Compost	Digestate
Manual (hand picking)	✓				
Screening	✓	✓		✓	
Screw separator		✓	✓		
Centrifugal separator		✓	✓		✓
Floating/ sedimentation		✓	✓		
Solubilisation (dissolution)		✓			
Magnetic separation	✓			✓	
Air separator (wind sifter)				✓	
Density separator				✓	



Education and communication

Dear resident,

Recycling your food waste is as easy as 1 2 3

Use the **FREE** biodegradable liners enclosed to recycle your food waste.

- 1
- 2
- 3

Use for collection

✓ Fruit and veg peelings / Egg shells / Plate scrapings / Mouldy food
 ✓ Meat and fish bones / Tea bags and coffee grounds / Small cut flowers

✗ Plastic bags / Bin bags / Packaging / Nappies / Garden Waste

Once you've used up the liners we've sent, just go online or pop to your local supermarket where you should be able to pick more up for as little as 6p each (look out for the compostable logo).

London recycles

VEOLIA

Food waste recycling is a clean and easy way to get rid of your unavoidable food waste. We all have it, whether it's tea bags, egg shells or banana skins, this service can be used for it all, even out of date food and bones.

The two-caddy system

with lockable lids.

Compact 7litre indoor caddy



- You can empty your kitchen caddy as often as necessary.
- Your caddy can be stored anywhere including in a cupboard or outside.
- Keep your caddies clean and avoid spillages by only filling the liner 3/4 full before tying.
- Give your caddy a quick rinse after emptying to keep it clean.

1 Keep your indoor caddy clean and fresh by using new liners



What can I put in my caddy?



Yes

- ✓ Out of date food left in fridge or cupboards
- ✓ Leftovers from meals
- ✓ Leftovers from preparation

No

- ✗ Liquids and oils
- ✗ Packaging
- ✗ Plastic bags



Best practice collections
+
Best practice treatment
= Quality Products

Getting it
right

Education and communication

- Make it easy
- Make it normal
- Ongoing




Compostables



**Making
best use of
our
products**



Image courtesy of 4R Group

A wide-angle photograph of a vast field of golden wheat stretching to the horizon under a sky filled with heavy, grey clouds. The wheat is in the foreground, showing individual stalks and heads. The sky is dark and moody, with some lighter patches where the sun might be breaking through. The overall tone is somber and contemplative.

‘Despite all our accomplishments, we owe our existence to a six-inch layer of topsoil and the fact that it rains’



Thank you!

Jenny@r-e-a.net

